

Spindle Turning

Making the Cut

Practice and Safety:

1. Sharp tools, and proper stance are essential for successful woodturning.
2. Wear Safety Shield
3. Remember to avoid screwbacks/runbacks and maintain control while shaping your woodwork.

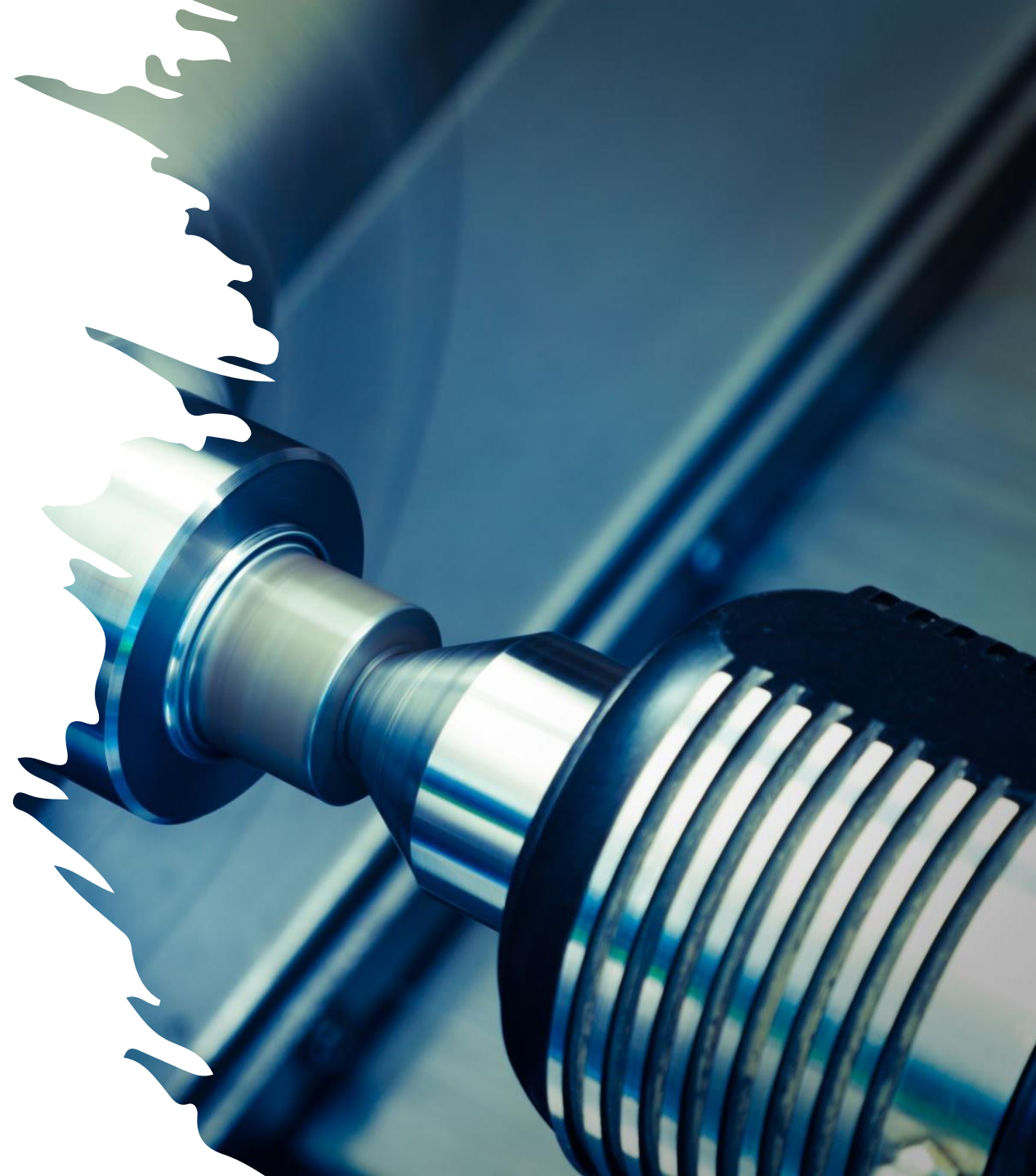
Why Spindle Turning

- Spindle Turning is one of the first steps on most of our projects. It is often the outside or inside of a spindle, vase, hollow-form...
- Once we begin to learn spindle turning (there are always new skills and tools), we will be limited to our imagination.
- In the Bible, Ecclesiastics 1:9, the preacher makes the point that there is nothing new under the sun. With this in mind, rather than learn one shape let's learn the skills to make them all.



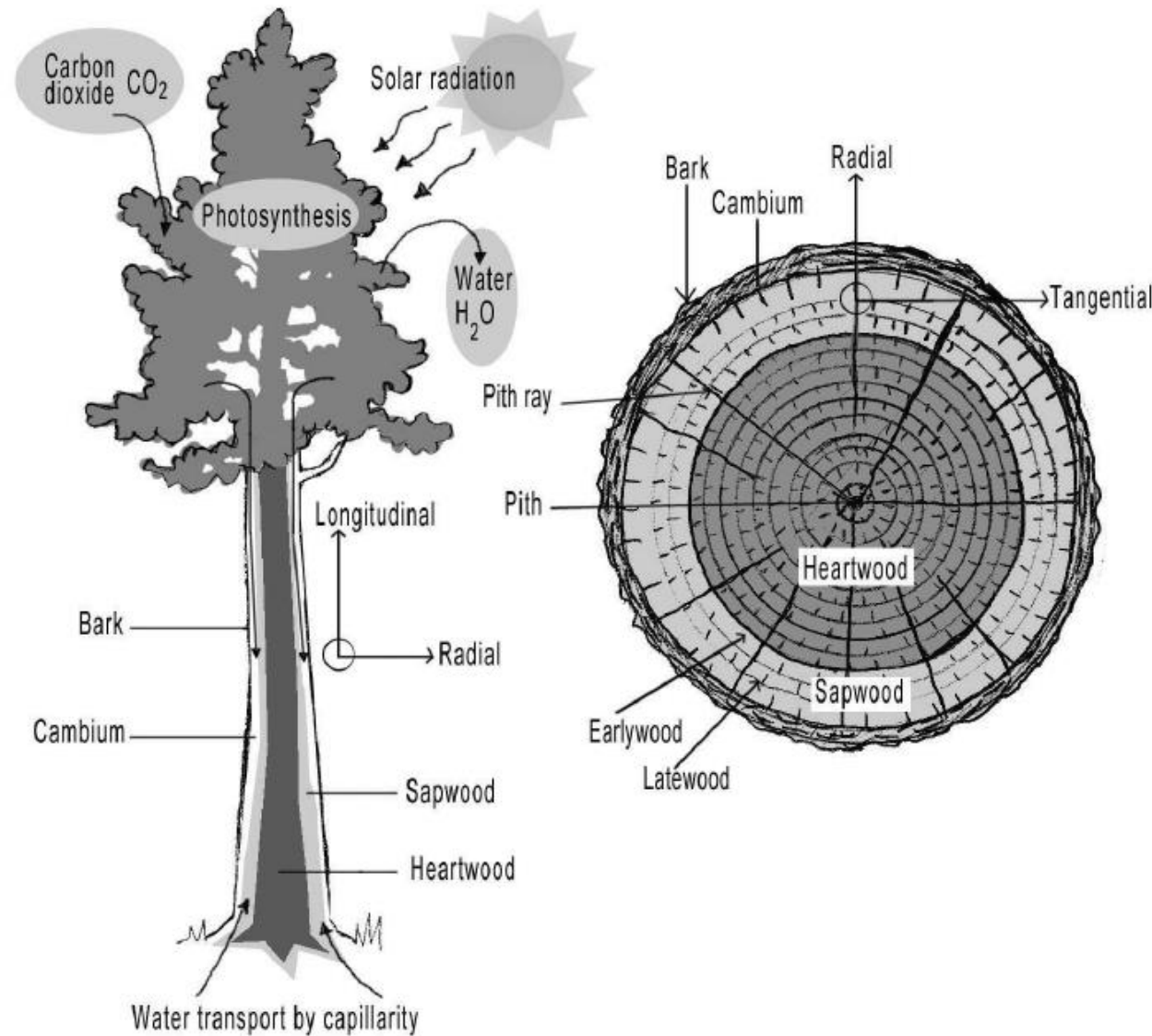
Definition of Spindle Turning

- Spindle Turning is where a piece of long grain wood is held between centers on a lathe and is being turned on its center axis.



Understanding Wood Grain

- When we talk about wood grain, we are referring to the orientation of wood-cell fibers. [Long grain refers to the side of the fibers, while end grain refers to the ends of the fibers that are exposed when the wood is cut across the growth rings.](#)
- Long grain is the most common type of wood grain and is pleasing to the eyes. It shows the natural grain patterns of the tree and is generally lighter. [End grain is more porous and absorbs finishes differently than long grain](#)





Steady Rest



Safe drive



Spur drive



Chuck & Jaws

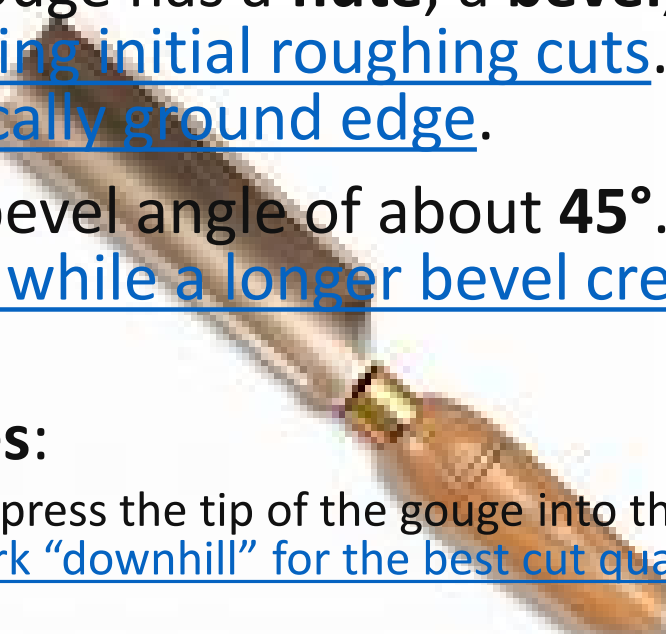


Live Center

HOLDING TOOLS

Spindle Roughing Gouge (SRG)

- A versatile tool used in woodturning to shape spindles.
- The spindle Roughing gouge has a **flute**, a **bevel**, and a **cutting edge**. The flute faces up at 90° during initial roughing cuts. It's recognizable by its semi-circular shape and vertically ground edge.
- **Bevel Angle:** Aim for a bevel angle of about 45°. A shorter bevel adds unnecessary resistance, while a longer bevel creates a fragile edge for roughing out work.
- **Cutting Beads and Coves:**
 1. To create beads, gently press the tip of the gouge into the spindle blank, working between the layout lines. Always work “downhill” for the best cut quality, starting at the top and cutting toward the bottom⁴.
 2. For coves (concave shapes), follow similar principles, ensuring a smooth transition from top to bottom⁴.



Spindle Gouge



Other Gougers





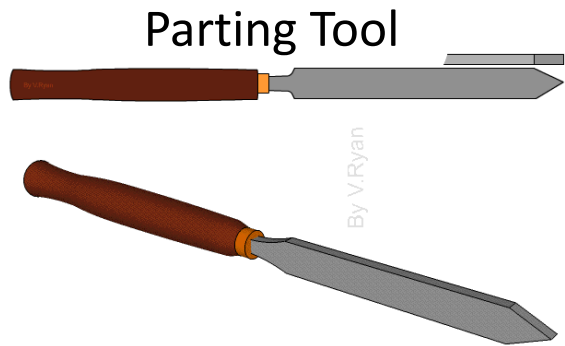
SRG – Spindle Roughing Gouge



Spindle Gouge



Bowl Gouge



Parting Tool

By V/Ryan



Skew

CUTTING TOOLS







